

# Grittleton Adventures



# Welcome to Grittleton Adventures

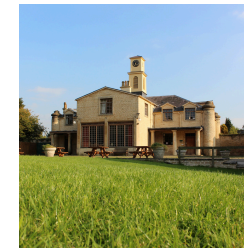
I am pleased to provide you with information about Grittleton Adventures for you look over as a potential location for your next Residential Trip.

Situated in the beautiful Wiltshire village of Grittleton on the edge of the Cotswolds, set in its 30-acre grounds Grittleton House is the perfect country- side location for a school activity adventure centre whilst being within reach of the M4 corridor providing easy travel opportunities to and from site.



## What's included?

- Simple Booking Procedure
- Free Party Leader Preview Visit
- Free Adult Places - Ratio of 1:10
- Additional Free Spaces for 1:1 Support
- Full Board Accommodation
- All Bedding Provided
- Party Leader Welcome Pack on Arrival
- Assigned School Leader for your Stay
- All Instructor Lead Activities
- All Equipment Provided
- Full Daytime Activity Programme
- Evening Activity Each Night
- Awards Evening with Presentation and Achievement Certificate for All
- 24 hour Centre Staff Support
- Instructor Supervision 8am-10pm
- Souvenirs Shop
- Plus much more....



Our goal at Grittleton Adventures is to provide the perfect residential experience for both pupils and teachers from the moment your trip is booked until you leave centre at the end of your adventure.



## Accommodation

The Manor House sleeps up to 170 in 3 separate accommodation areas on the 1st and 2nd Floor. Each school having their own area with spacious dormitories of between 4-10 children along with Boys and Girls Bathrooms.

The Old Stables comprises of the Stable Block and Clock Tower and accommodates approx. 90 children with 4-8 in a room with ensuite bathrooms.

All accommodation areas in The Manor House and The Old Stables have multiple lockable teacher bedrooms that are either single or twin bedroom.

To ensure all children feel safe and secure during their time with us, particularly at night-time, we ensure that our Grittleton Adventures staff team are available to provide any support needed. We have a member of our team on call 24 hours a day, along with staff on duty till 10pm each evening to give assistance. There is CCTV coverage and coded external doors.





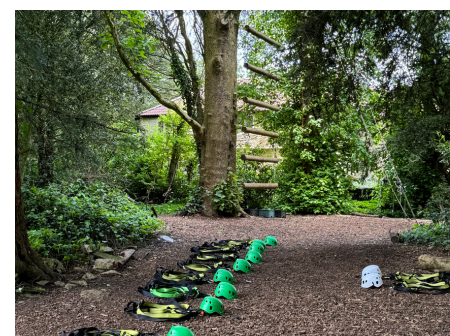
## The Restaurant

The restaurant at Grittleton House is located at The Old Stables. Leading on from a central cobbled courtyard. The Clock Tower provides a unique dining experience for all children and staff alike in the authentic stable setting. All meals are prepared on site, and we can cater for almost all dietary requirements.



## Staff Lounges

We have 3 Staff Lounges in the Main House – 1 in each of the accommodation areas and are all equipped with a Kettle, Microwave and Fridge, along with comfortable chairs to relax in at the end of each day.





## Our Activities

The key to any successful activity trip is for the children to experience a wide range of activities that are exciting, challenging and above all FUN!!

We provide a host of engaging activities for you to choose to ensure you can achieve the learning outcomes you require for your group.

Our activity staff fully entertain the children from 8am – 10pm

### Team Building

By working together as a team learn how to design and build Dens or construct Buggy's to race. Combining physical, mental and creative challenges that gets the group working together as one

### Problem Solving

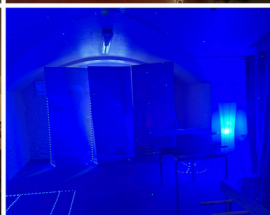
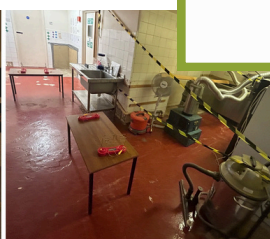
Learn communication and trust skills in a collection multi-skilled challenges whilst exploring all 5 senses in Sensory Trail or combining knowledge, logical thinking and reasoning to Escaping the Room

### Physical Challenge

From climbing crates to having fun in Zorbs or bouncing in Aeroball, our physical activities will ensure even the most energetic find the challenges they need

### Skill Learning

Develop dexterity, control and precision with Archery. Learn new skills on our skateboards and scooters or survival and fire lighting skills in our Bushcraft Sessions





**Sample Activity Programme**

MONDAY	Welcome Talk, Packed Lunch, Orientation Followed by Games and Ice Breakers				Crate Challenge	Settle into Rooms	Dinner	Night Hike
TUESDAY	Breakfast	Body Zorbs	Water Wars	Lunch	Buggy Building	Survival	Dinner	Campfire
WEDNESDAY	Breakfast	Skateboards & Scooters	Crystal Maze	Lunch	Archery	Jacob's Ladder	Dinner	Sports Evening
THURSDAY	Breakfast	Aeroball	Low Ropes	Lunch	Problem Solving	Escape Room	Dinner	Celebration Night
FRIDAY	Breakfast	Axe Throwing	Leave accommodation, Lunch, Say goodbye and Travel back to School					

**What's Next?**

To discuss your options further please contact me on **01249 783 203** or via email on [stuart.wilcox@grittleton-adventures.co.uk](mailto:stuart.wilcox@grittleton-adventures.co.uk)

Thank you for taking the time to look through our details. I hope it has been of interest to you and I look forward to hearing from you soon to start planning your Grittleton Adventure.

