



Gaveston Hall

Welcome to Gaveston Hall

Grittleton Adventures are pleased to provide you with information for you look over about Gaveston Hall as a potential location for your 2026 School Residential Trip.

Tucked away in the picturesque West Sussex village of Nuthurst, Gaveston Hall resides in its own 100 acres of woodlands, fields, streams and lakes offering a peaceful and safe environment, in an idyllic countryside setting perfect for your next school residential trip.

Despite the rural location close to the South Downs National Park, Gaveston Hall is ideally situated being under an hour from London and just 40 mins from the South Coast.

What's included?

- Simple Booking Procedure
- Free Party Leader Preview Visit
- Free Adult Places - Ratio of 1:10
- Additional Free Spaces for 1:1 Support
- Full Board Accommodation
- Party Leader Welcome Pack on Arrival
- Assigned School Leader for your Stay
- All Instructor Lead Activities
- All Equipment Provided
- Full Daytime Activity Programme
- Evening Activity Each Night
- Awards Evening with Presentation and Achievement Certificate for All
- 24 hour Centre Staff Support
- Instructor Supervision 8am-10pm
- Souvenirs Shop
- Plus much more....



Our goal at Grittleton Adventures is to provide the perfect residential experience for both pupils and teachers from the moment your trip is booked until you leave centre at the end of your adventure.





Accommodation

Gaveston Hall has a capacity of 90 children plus accompanying adults. There are 2 accommodation areas, The Main House and the Chalets, that are able to either separately house 2 schools between them or 1 school across both.

Each accommodation area sleeps approximately 45 children in dormitory style rooms of varying size from 4-12 children.

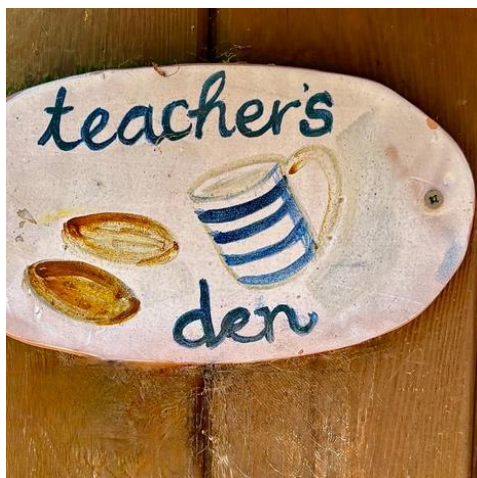
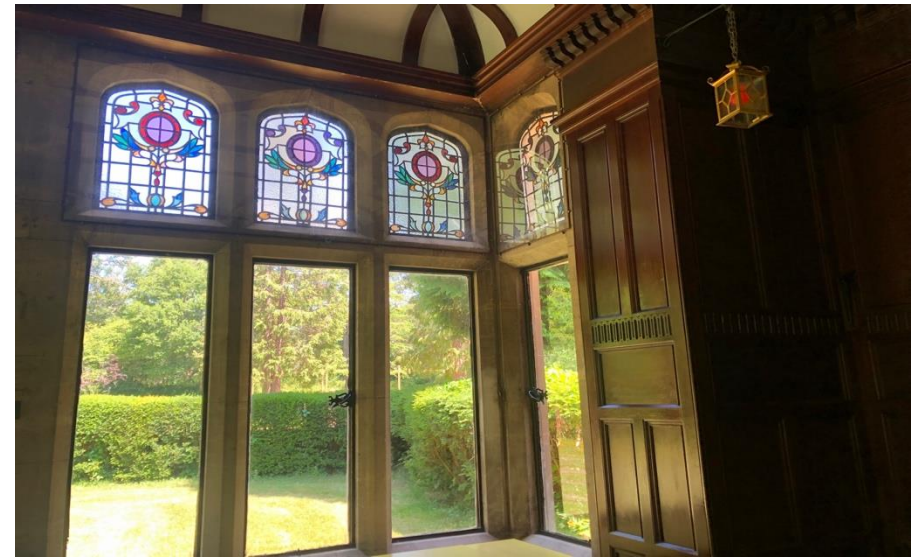
Adult bedrooms are either single or twin and are a mixture ensuite or located close to separate adult bathrooms.

To ensure all children feel safe and secure during their time with us, particularly at night-time, we ensure that our Grittleton Adventures staff team are available to provide any support needed. We have a member of our team on call 24 hours a day, along with staff on duty till 10pm each evening to give assistance. There is also CCTV coverage.



The Restaurant

Our restaurant is located at the back of the main house and serves a selection of tasty, nutritious and healthy meals for everyone to enjoy whilst taking in the amazing views of the back grounds.



Staff Lounge

We have fully equipped Staff Lounge with a Kettle, Microwave and Fridge, along with comfortable chairs to relax in either during or at the end of each day.

Our Swimming Pool

Enjoy all the fun of the water in our own private swimming pool whilst under the watchful eye of our qualified lifeguards





Team Building

By working together as a team learn how to design and build Dens or construct Buggy's to race. Combining physical, mental and creative challenges that gets the group working together as one

Problem Solving

Learn communication and trust skills in a collection multi-skilled challenges whilst exploring all 5 senses in Sensory Trail or combining knowledge, logical thinking and reasoning in Escape and Evasion

Our Activities

The key to any successful activity trip is for the children to experience a wide range of activities that are exciting, challenging and above all FUN!!

We provide a host of engaging activities for you to choose to ensure you can achieve the learning outcomes you require for your group.

Our activity staff fully entertain the children from 8am – 10pm

Physical Challenge

From climbing crates to having fun in Zorbs or bouncing in Aeroball, our physical activities will ensure even the most energetic find the challenges they need

Skill Learning

Develop dexterity, control and precision with Archery. Learn new skills on our skateboards and scooters or survival and fire lighting skills in our Bushcraft Sessions





Sample Activity Programme

MONDAY	Welcome Talk, Packed Lunch, Orientation Followed by Games and Ice Breakers				Crate Challenge	Settle into Rooms	Dinner	Night Hike
TUESDAY	Breakfast	Body Zorbs	Water Wars	Lunch	Buggy Building	Survival	Dinner	Campfire
WEDNESDAY	Breakfast	Skateboards & Scooters	Sensory Adventure	Lunch	Archery	Sports & Games	Dinner	Pool Games
THURSDAY	Breakfast	Aeroball	Low Ropes	Lunch	Problem Solving	Raft Building	Dinner	Celebration Night
FRIDAY	Breakfast	Den Building	Leave accommodation, Lunch, Say goodbye and Travel back to School					

What's Next?

To discuss your options further please contact me on **01249 783 203** or via email on stuart.wilcox@grittleton-adventures.co.uk

Thank you for taking the time to look through our details. I hope it has been of interest to you and I look forward to hearing from you soon to start planning your Gaveston Adventure.

